
Students with Disabilities in Higher Education: The numbers in pictures

Every year AHEAD collects Ireland's only verified statistics on the number of students with disabilities participating in higher education. Each year a survey is sent to the Disability/Access Officers of all HEA funded institutions covering many areas from fields of study to examination accommodation types and the information returned is collated into a written report and an accompanying set of interactive tables, allowing you to interrogate the data as you wish. The following graphics represent some of the key findings of our most recently published report covering the academic year 2013/14.

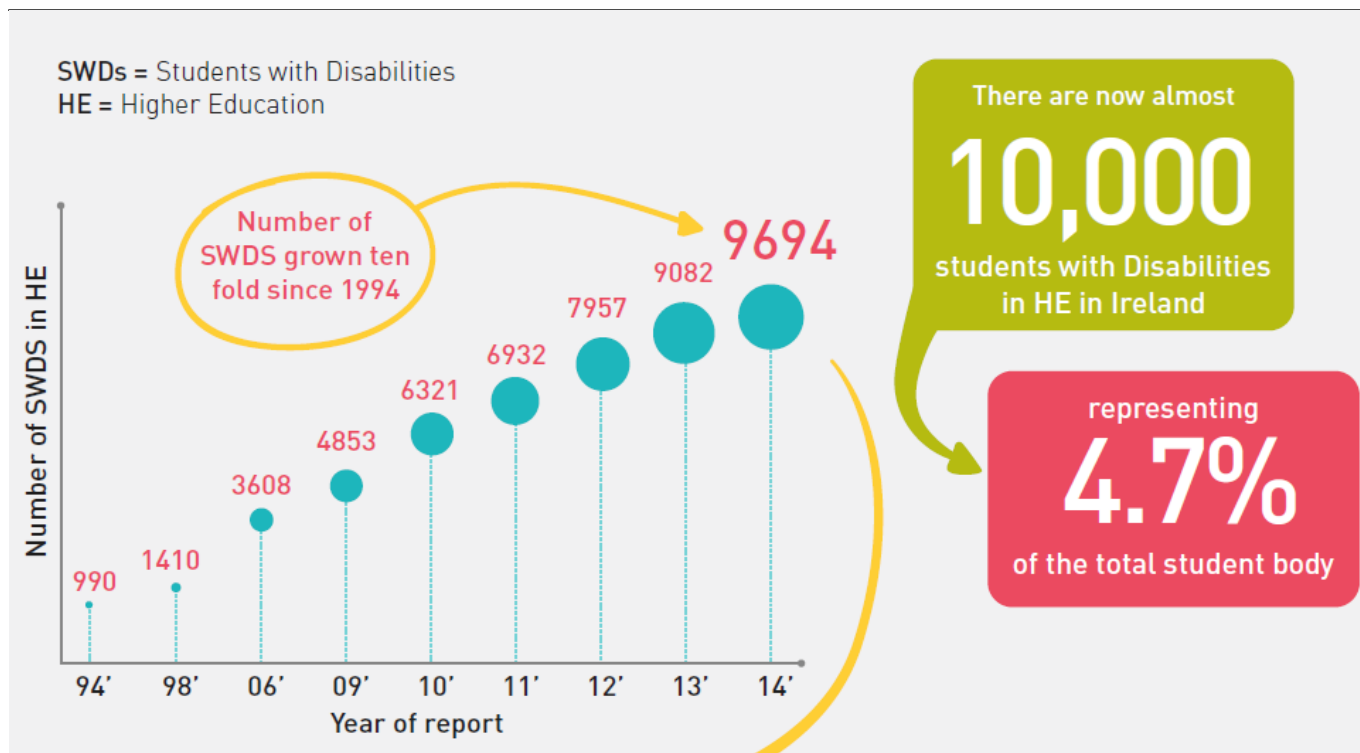
Students with Disabilities in Higher Education

There are now almost 10,000 students with Disabilities in HE in Ireland representing 4.7% of the total student body

Number of SWDS (Students with Disabilities) grown ten fold since 1994

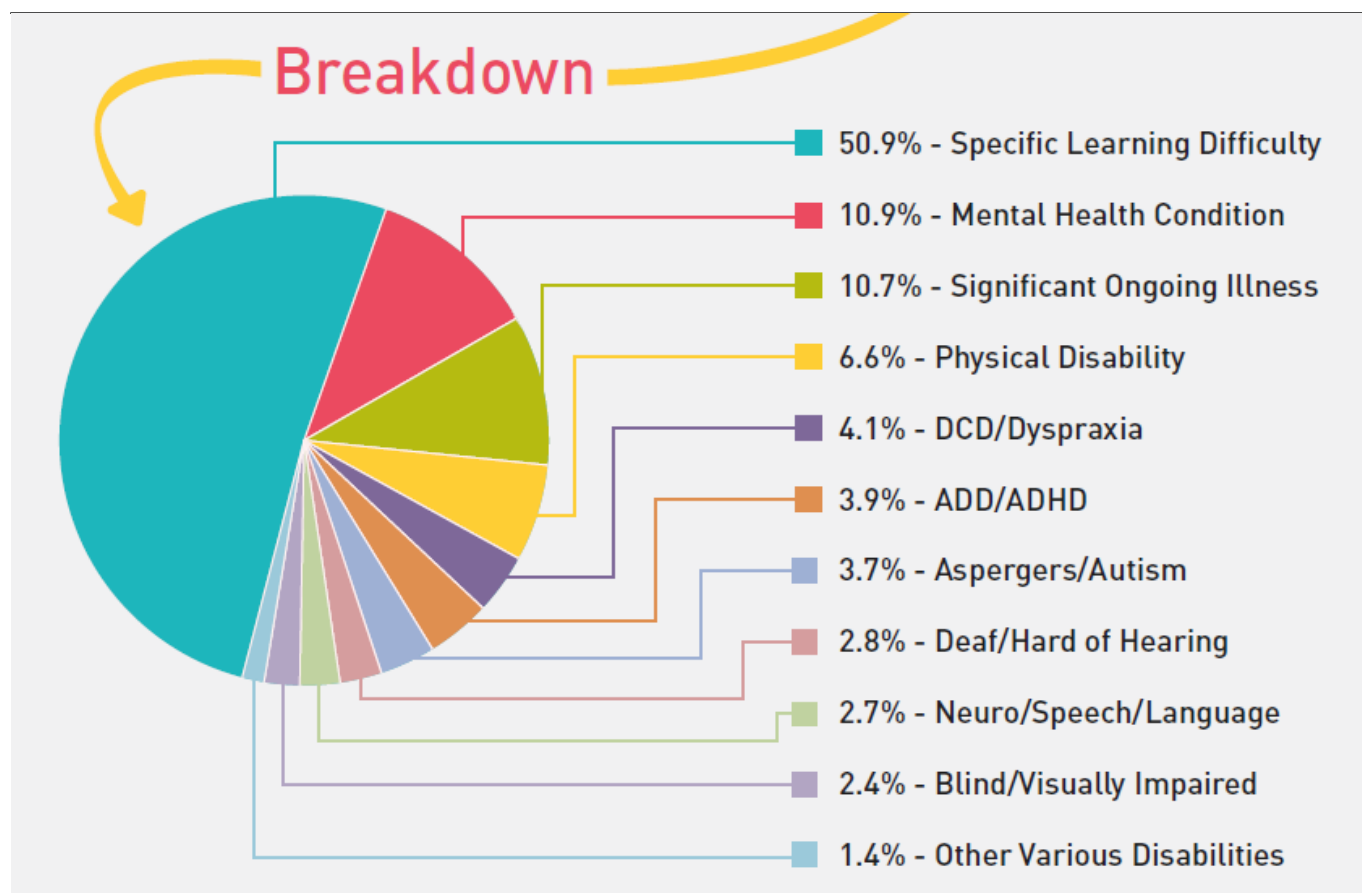
Number of SWDS in HE by Year

1994	990
1998	1410
2006	3608
2009	4853
2010	6321
2011	6932
2012	7957
2013	9082
2014	9694



Breakdown

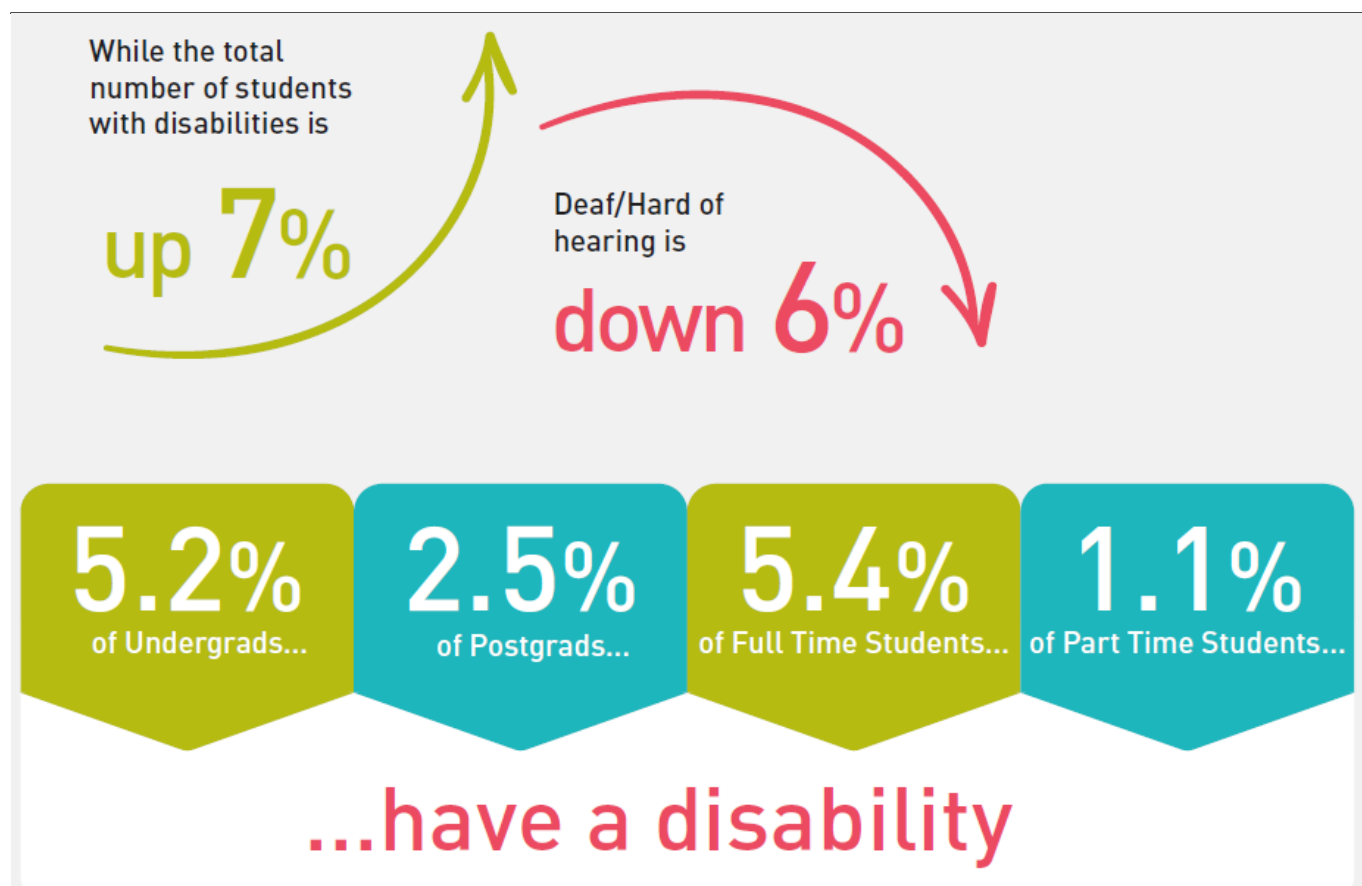
50.9%	Specific Learning Difficulty
10.9%	Mental Health Condition
10.7%	Significant Ongoing Illness
6.6%	Physical Disability
4.1%	DCD/ Dyspraxia
3.9%	ADD/ ADHD
3.7%	Aspergers/ Autism
2.8%	Deaf/ Hard of Hearing
2.7%	Neuro/ Speech/Language
2.4%	Blind/ Visually Impaired
1.4%	Other Various Disabilities



Concerns

While the total number of students with disabilities is up 7%, Deaf/Hard of hearing is down 6%

Undergrads with a disability	5.2%
Postgrads with a disability	2.5%
Full Time Students with a disability	5.4%
Part Time Students with a disability	1.1%



Unless stated, data referred to is for 2013/14.

To read the full report or play with the interactive tables, visit www.ahead.ie/datacentre. A text version of the data in this graphic can be found here: <http://www.ahead.ie/journalautumn15-stats-textversion>



Dara Ryder

CEO, AHEAD

[@dararyder](https://twitter.com/dararyder)

Dara Ryder is Chief Executive Officer of AHEAD, having previously managed AHEAD's digital presence and developed a suite of online CPD programmes relating to inclusive practice in his role as Digital Media and eLearning Manager there.

After graduating from Queens University in 2005, Dara joined Dun Laoghaire College of Further Education as a lecturer, where he became interested in inclusive education when working first-hand with students with disabilities in his classroom. When the opportunity arose in 2008, he joined AHEAD where he has been working ever since on creating inclusive environments in education and employment for people with disabilities.