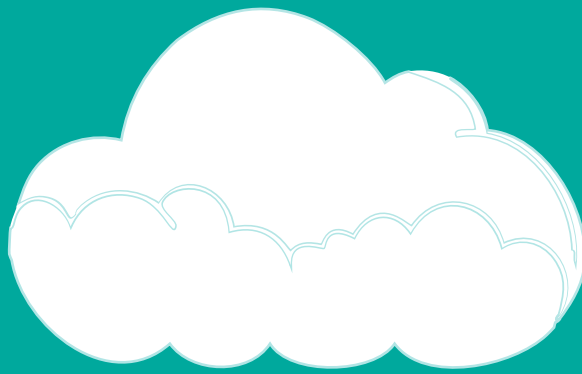


# **Panorama**

## AHEAD CONFERENCE 2024



# Welcome!

Thank you for registering for the AHEAD Conference 2024. This attendee information pack contains information on the hybrid format, programme times, and what you can expect.

If you have any remaining questions please contact [events@ahead.ie](mailto:events@ahead.ie).

## What can the online audience see and hear?

In most cases the online audience will see a live-stream of what's happening in-person. AV technicians will be controlling the cameras so there will be a mix of shots streamed to the online audience. If in-person attendees ask questions, they will be streamed to the online audience who will be able to follow along.

## What can the in-person audience see and hear?

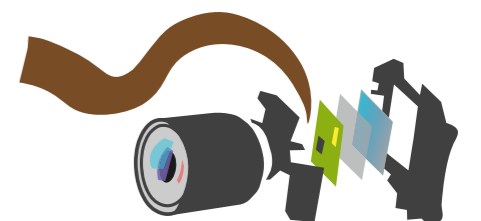
The in-person audience can see everything that's happening live but cannot see the online audience. Online presenters will be projected onto the big screens for the in-person audience to see and hear.

**Lightning Sessions** may feature either online or in-person speakers. These sessions will be fully available to both the in-person and online attendees and engagement with the session will be identical for both audiences. Lightning sessions will be recorded, captioned, and made available after the conference.

**Online Workshops** will be online only, and all speakers will be presenting online. These sessions will be recorded and made available after the conference once they have been captioned.

**Main Sessions** may feature both online and in-person speakers. These sessions will be fully available to both the in-person and online attendees and engagement with the session will be identical for both audiences. These sessions will be recorded, captioned, and made available after the conference.

Published by AHEAD 2024 for the AHEAD Conference: Panorama



# Panoramic View: Widening the Lens for Systemic Inclusion in Tertiary Education

The rapidly growing diversity in our further education and training (FET) and higher education (HE) learner population has brought greater recognition of the need to ensure that 'inclusion is everyone's business'. A growing number of students with disabilities, greater ethnic and socio-economic diversity, and rising numbers of second language learners amongst, have further highlighted the complex and intersecting identities within our institutions. All staff have a part to play in ensuring we create programmes, services and environments which enable them to access, participate and flourish in all aspects of the educational experience.

In an Irish context, important goals concerning disability inclusion and universal design are embedded in national FET and HE strategy, and evidence exists of significant engagement in professional development, (forthcoming, Healy et al.).

But the same research highlights a lack of strategic focus on universal design at the institutional level, and challenges to creating implementation structures which support its sustainable application.

This conference explores strategies and structures which sustainably embed universal design and disability-inclusive approaches in institutional policy and practice, embracing the ever-complex identities of all learners. The aim is to take a panoramic view of our institutional approaches to inclusion and create a space for reflection, networking and the broadening of our horizons.

Drawing on the literature, we'll be focussing on ideas and actions in four key pillars of our institutions, and how they interact and intertwine to create a more inclusive environment for our students:

- Learning, Teaching and Assessment
- Supports, Services & Social Engagement
- Physical Environment
- Digital Environment

## Programme

The programme will begin at 09:30am each day.

### Wednesday, 20<sup>th</sup> March 2024

#### 09:30 Welcome and Introduction

- Launch of AHEAD Strategic Plan 2024-28.
- Video address from Minister Simon Harris, opening the conference and marking the launch of the ALTITUDE Charter.

#### 10:00 Lightning Sessions:

1. My Voice, My Choice.
2. Integrating UDL Principles into Module Design and Assessment Strategies.
3. How do students with disabilities experience online education: A Systematic Review.
4. Embedding Universal Design for Learning in Higher Education: Lessons to Date.
5. Harnessing AI for inclusive education and employment: new possibilities for physical, cognitive, and communication access.

#### 10:45 Main Session: Challenges to Strategically Embedding a UD Approach



11:15 Break

- 11:40 Main Session: Starting a National Conversation on Embedding Universal Design
- Introducing the ALTITUDE project – The National Charter for Universal Design in Tertiary Education.
  - Leadership in Universal Design in Tertiary Education - a new module for leaders.
  - Developing a Web Accessibility Statement for the Tertiary Sector.
  - Tertiary Leaders Panel - the challenges and opportunities of implementing the ALTITUDE Charter.

13:35 Lunch

14:35 Online Workshop: TCD Sense

15:35 Break

15:55 Online Workshop: At the intersection of stakeholder perspectives - facilitating a faculty and student dialogue on UDL priorities

17:00 Conference Close

10:45 Main Session: Exploring Generative AI Together: How can Artificial Intelligence contribute to Student Support?

11:30 Break

- 11:55 Main Session: Starting a National Conversation on Embedding Universal Design in Tertiary Education
- The Toolkit for Inclusive Tertiary Education.
  - Student Perspectives on Universal Design - Diverse Student Panel Discussion.

13:00 Lunch

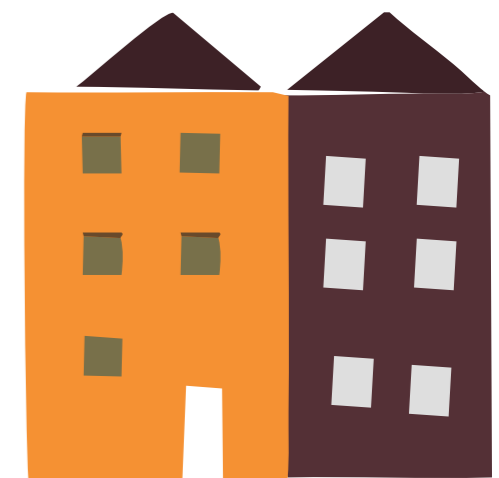
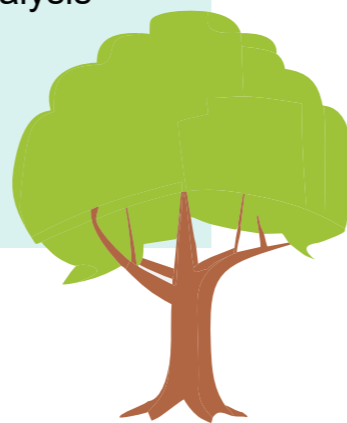
14:00 Online Workshop: Universal Design for Learning as a Two-Pronged Approach to Inclusive Practice in Initial Teacher Education in Ireland: The Benefits and Challenges

15:00 Conference Close

## Thursday, 21<sup>st</sup> March 2024

09:30 Welcome and Introduction

- 10:00 Lightning Sessions:
1. Resolving the tension between presumed-to-be rigid programmes and UDL: A health professions case study
  2. International mobility is for everyone: supporting students with disabilities to study or work abroad
  3. Whole institution approach to students' diversity and inclusion in European universities: A SWOT Analysis
  4. Designing a Course Template for a Large Institution
  5. Increasing awareness to embed inclusion: The Universal Design in Education Project





ahead