

Does one size fit all?

Assistive Technology in the learning environment and at work.

The WAM programme at AHEAD in conjunction with Dell Ireland are running a debate examining the myths and assumptions that assistive technology is effective in all environments.

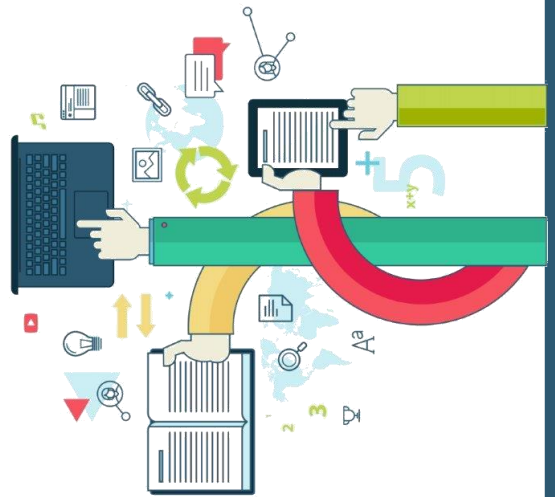
Contributors include James Northridge (UrAbility), Ger Craddock (National Disability Authority), Siobhan Long (Enable Ireland) and Trevor Boland (DIT).

To register go to <http://www.ahead.ie/event-dellfeb2015>

Tuesday 10th February @ Dell Ireland, Cherrywood, Dublin
10.00am - 1.30pm with lunch provided

Target audience: Student Support Staff in Higher education, employers, students and graduates with disabilities.

If you have any questions about the event, please contact us at wam@ahead.ie or by phone 01 716 8844.



wam
@ahead.ie



NATIONAL FORUM
FOR THE ENHANCEMENT OF TEACHING
AND LEARNING IN HIGHER EDUCATION

EngineersWeek
8 - 14 February 2015