

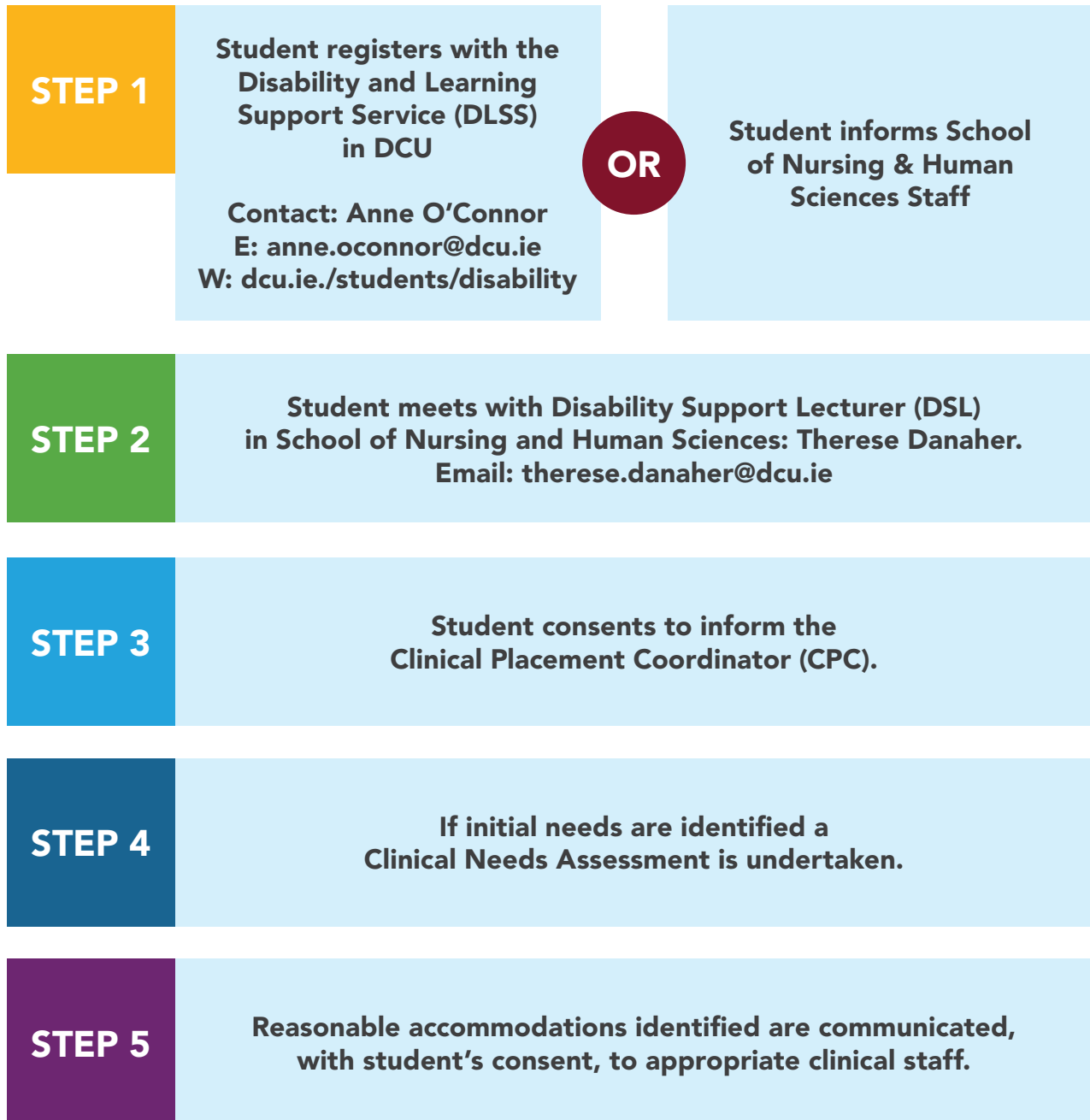
Guidelines for Dublin City University **Student Nurses** with Disabilities requiring Reasonable Accommodations on Clinical Placements



Association for Higher Education Access & Disability



Steps for Student Nurses with Disabilities before attending Clinical Placement



This document outlines the steps required for a DCU BSc. Nursing student with a disability

Ensuring that DCU BSc. Nursing students are appropriately supported while on Clinical Placements is a collaborative approach involving the DCU School of Nursing, Clinical Partner Services and the Disability & Learning Support Service in DCU.

The aims of the Guidelines are:

- To promote equal opportunities for all students in the clinical environment
- To promote disclosure amongst student nurses with disabilities

Step 1

Student registers with the Disability & Learning Support Service (DLSS)

At the beginning of term, register with the Disability & Learning Support Service (DLSS), in DCU please contact: anne.oconnor@dcu.ie. Or Phone: 01 7005160. A meeting will be arranged with the Disability Officer where a Needs Assessment will be carried out identifying any supports required while in DCU. Some students may inform school staff initially; these students will be directed to the Disability Support Lecturer, Therese Danaher. It is advisable that you contact and arrange a meeting as soon as possible with the Disability Support Lecturer.

Should a student choose to disclose to the School of Nursing / Partner Services directly without contacting the DLSS, they will be advised to register with the DLSS.

Step 2

Student meets with the Disability Support Lecturer, School of Nursing

Students are advised to speak to their Disability Support lecturer at least 3 weeks before the practice placement begins.

During the initial meeting with the Disability Support Lecturer the student may discuss any concerns they have in relation to their learning and assessment in the clinical setting. The student may not have required academic accommodations in college however assessment for practice supports may be identified.

Step 3

Student consents to inform the Link Clinical Placement Coordinator (CPC)

The student signs the consent form with the Disability Support Lecturer (DSL), Therese Danaher. The Link Clinical Placement Coordinator (CPC) is contacted and a meeting is to be organised with the student.

Step 4

Clinical Needs Assessment

A Clinical Needs assessment is a joint process undertaken with the student, the Disability Support Lecturer, the Link Clinical Placement Coordinator and the Disability & Learning Support Service in DCU. It helps identify any reasonable supports that might assist the student while on clinical placement. Acquisition or agreement of necessary accommodations should be completed before placement commences.

Step 5

Reasonable accommodations identified are communicated with students consent to appropriate clinical staff

The student's reasonable accommodations will be discussed and planned with the student, the Preceptor and others that need to know.

To Note:

- Disclosure of a disability, specific learning difficulty or medical condition is the student's responsibility.
- Confidentiality is assured and information will only be disclosed to those persons identified in the Clinical Needs Assessment, where there is written consent from the student.
- It is advisable to visit and make an appointment with your Link Clinical Placement Coordinators (CPC) before you begin your placement, should you require reasonable accommodations.
- If required, reasonable accommodations can be reviewed and/or modified depending on the nature of the clinical environment should the need arise.

What are Reasonable Accommodations?

Reasonable accommodation(s) is described as any action or special treatment that reduces significant disadvantage, which may necessitate altering the physical environment, modifying the delivery of a course or modifying assistive technology (AHEAD, 2008).

The following illustrates examples of Reasonable Accommodations for students with learning difficulties (e.g. dyslexia) which may be of use on clinical placement

- Additional time in writing up handover reports/notes
- Use of recording device at handover meetings *
- Use of electronic dictionary/reading pen*
- Use of wall planner/calendar
- Assistance with proof reading reports
- Quiet environment to write up reports

Note: Students who are using electronic devices must adhere to local confidentiality policies.

List of Contacts

Therese Danaher

Disability Support Lecturer
therese.danaher@dcu.ie

Anne O'Connor

Head, Disability & Learning Support Service
anne.oconnor@dcu.ie
01 700 5160

**Developed in Collaboration with the
DCU School of Nursing & Human Sciences
and Partner Health Service Providers**



Private and Confidential

Student Nurses Disclosure Form

I understand that by choosing not to disclose my disability, it may affect my receiving optimum support during my placement.

I understand that my accommodation needs may change in the various practice placements over the duration of the BSc programme.

I am aware that under the Data Protection Act (2003) that all information and related documents will only be kept on my completion of the BSc programme

Having read the above, **I consent/ do not consent** to information relating to the nature of my disability and needs for reasonable accommodation being shared when required to the following practice and support services.

Name _____ (Student Nurse)

Signed _____ Date _____

Programme _____

Year of Programme _____

Name of Partner Services: _____

I will disclose to the designated Link Clinical Placement staff member, the above student nurses' name. This information is being disclosed to benefit the clinical environment and the student nurse's needs in order to achieve the required competencies of the placement. Reasonable accommodations may need to be available for her/him whilst in clinical practice. I will disclose to the relevant Disability & Learning Support Service in DCU and Clinical Placement Staff the above student nurses' name & ID number.

Signed _____ Date _____

Disability Support Lecturer, Dublin City University

This disclosure form, once signed, relates to all clinical placements through the student's programme

Private and Confidential

Student Nurses Disclosure Form while on Placement

This form to be used when a student nurse on placement discloses to the Clinical Partner Services

I understand that by choosing not to disclose my disability, it may affect my receiving optimum support during my placement.

I understand that my accommodation needs may change in the various practice placements over the duration of the BSc. programme.

I am aware that under the Data Protection Act (2003) that all information and related documents will only be kept until my completion of the BSc Programme.

Having read the above consent to release information, **I consent/ do not consent** to information relating to the nature of my disability and needs for reasonable accommodation being shared with the Disability & Learning Support Service in DCU and Clinical Placement Staff.

Name _____ (Student Nurse)

Signed _____ Date _____

Student Number _____

Programme _____

Year of Programme _____

If student consents to release information, please complete the remainder of this form:

I will disclose to the relevant Disability & Learning Support Service in DCU and clinical placement staff the above student nurses' name & ID number. This information is being disclosed to ensure that the student receives any reasonable accommodations that they may require while a student of DCU.

Signed _____ Date _____

This disclosure form, once signed, relates to all clinical placements through the student's programme